



# WESTMIN 795

3 BED + LIVE-WORK

3.5 BATH

INTERIOR 1,866 SQ. FT.

OUTDOOR LOUNGE 138 SQ. FT.

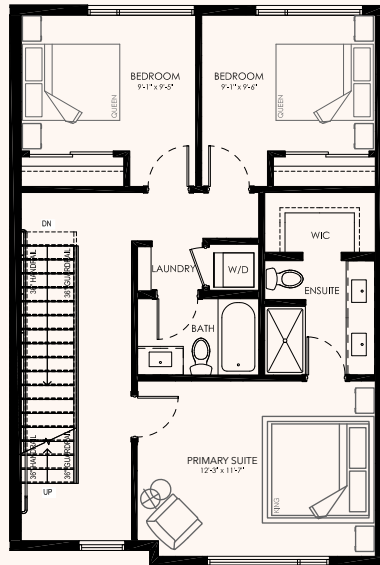
ROOFTOP PATIO 710 SQ. FT.

[WESTMIN795.CA](http://WESTMIN795.CA)

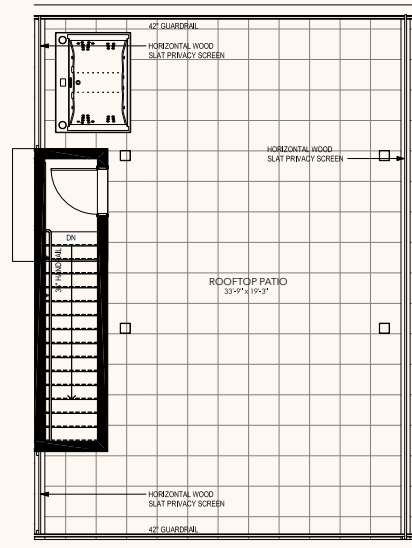
250-274-3552

info@westmin795.ca

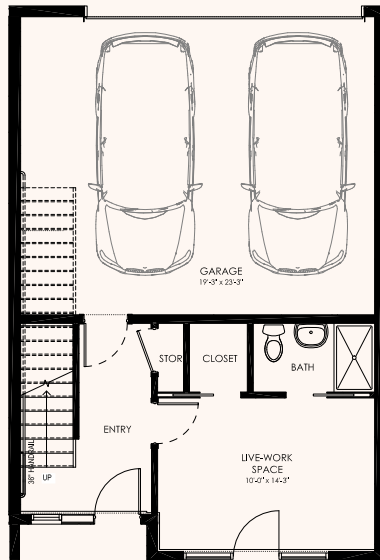
795 Westminster Avenue West,  
Penticton, BC



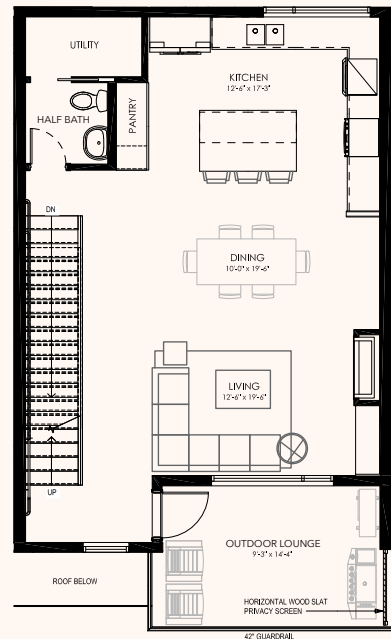
UPPER FLOOR



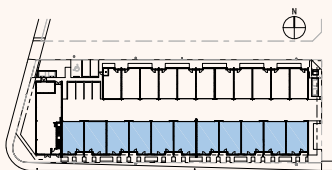
ROOFTOP PATIO



GROUND FLOOR



MAIN FLOOR



SKYLINE

CANTIRO



Dimensions, sizes, specifications, layouts and materials are approximate only and subject to change without notice. E.&O.E.